



# CREATE

KEEPING THE GO IN CHICAGO

## GS1

## 65<sup>th</sup> & Harlem Avenue & Belt Railway of Chicago Grade Separation

### Location

65<sup>th</sup> Street and 63<sup>rd</sup> Street at Harlem Avenue (IL-43)

Chicago, Bedford Park, and Summit, IL

### Daily Trains Affected

33 freight trains

Project Website: <http://www.il43study.org/>

### Scope of Work

The project will eliminate the at-grade crossing of 65<sup>th</sup> Street and two Belt Railway of Chicago (BRC) tracks located approximately 100 feet east of Harlem Avenue. This will be accomplished by creating either an overpass or underpass for vehicles using 65<sup>th</sup> Street at this location. Additional traffic safety improvements will also be made to the nearby intersection of 63<sup>rd</sup> Street and Harlem Avenue, where the same railroad tracks cross 63<sup>rd</sup> Street approximately 300 feet east of the intersection.

### Benefits

Daily, 9,850 vehicles and 185 CTA and Pace buses (#165, #307 and #386) pass through the 65<sup>th</sup> Street crossing, which is on a state-designated truck route. An additional 17,500 vehicles pass through the adjacent intersection on Harlem Avenue at 63<sup>rd</sup> Street. These grade crossings are located in close proximity to BRC's Clearing Yard, one of the busiest in the City of Chicago. Every train passing through these grade crossings are either entering or exiting this yard, and must move at very slow speeds (10-25 mph) in this area. Trains may also be delayed due to servicing of rail customers along the same line.

This project will reduce roadway congestion and improve safety at this location. The 65<sup>th</sup> Street grade crossing separation will eliminate delay to over 1,100 vehicles daily, resulting in alleviation of 644 daily motorist hours of delay. It will also eliminate the potential for collisions between vehicles and trains.

The crossing at 63<sup>rd</sup> St. is designated a "911 Critical Crossing." This is a critical location for emergency services to access communities that have a high frequency of train movements or



delays. The grade separation at 65<sup>th</sup> Street and additional safety improvements at 63<sup>rd</sup> St. will improve emergency responder travel times throughout the area.

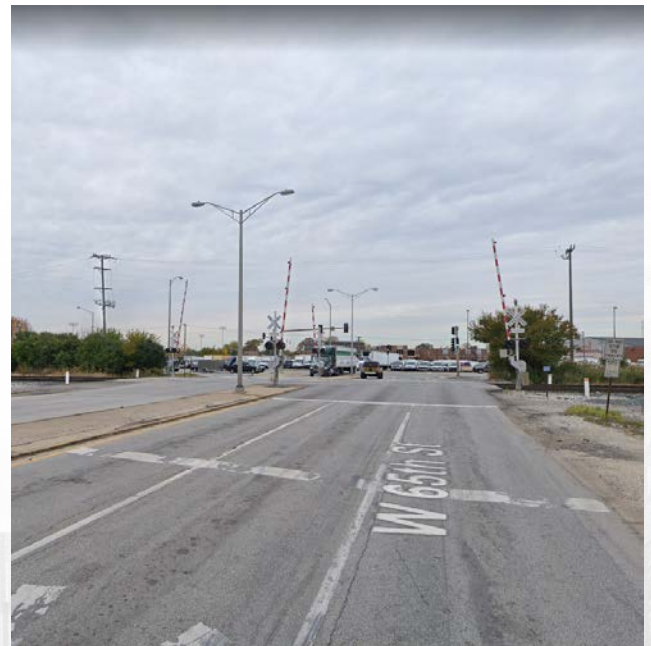
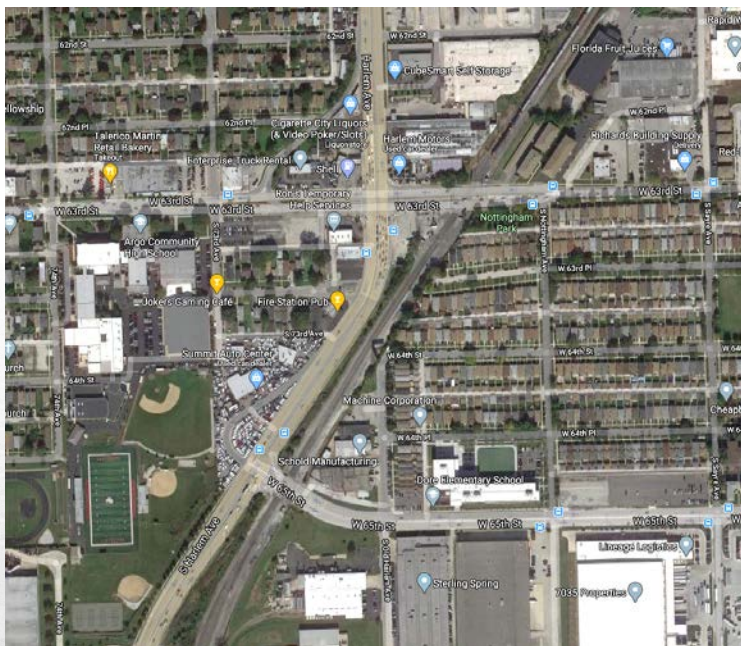
**Communities Benefited:**

- Chicago – Clearing community area
- Bedford Park, IL
- Summit, IL

*Project Status*

Phase I – NEPA – Preliminary Design (30% Design)	Phase II – Final Plans, Specifications, and Estimates	Phase III - Construction
Underway		

*Project Location Map*



Aerial photo of 65<sup>th</sup>/Harlem and 63<sup>rd</sup>/Harlem intersections

65<sup>th</sup> Street facing west approaching BRC tracks (foreground) and Harlem Avenue (background)