



CREATE

KEEPING THE GO IN CHICAGO

GS16

Irving Park Road & Canadian Pacific Railroad Grade Separation

Location

Irving Park Road at and east of York Road
Bensenville, IL.

Daily Trains Affected

25 freight trains

Scope of Work

This project includes a grade separation of IL Route 19 (Irving Park Road) at the Canadian Pacific Railroad (CPRR) in Bensenville, IL. The project includes pavement reconstruction and widening, improved intersection geometry, additional auxiliary lanes, drainage system improvements, and signal modernization.

The most significant component of the improvement includes lowering Irving Park Road and raising the Canadian Pacific Railroad Bridge to provide an improved vertical clearance. The structure is a 131 foot single span bridge with closed abutments.

Other project components include construction of retaining walls along the raised railroad alignment, culverts to convey the relocated Bensenville Ditch, a 72 inch storm sewer to improve drainage and provide detention, additional turning lanes at the intersection

Benefits

Daily, 32,600 vehicles and 31 Pace buses pass through the crossing. Separation of the roadway from the rail line reduces roadway congestion and improves safety at this location on Irving Park Road (IL-19) – a primary arterial road. This grade separation is located at the southwestern edge of O’Hare Airport, and is adjacent to and was coordinated with construction of the grade separation of the Union Pacific Railroad over Irving Park Road (an O’Hare Modernization Program project).

This separation also significantly improves railroad operations by enabling the CPRR to run trains unimpeded at all times. Currently the CPRR averages 25 trains per day. During peak weekday Metra commuter service CPRR does not run trains across IL Route 19.



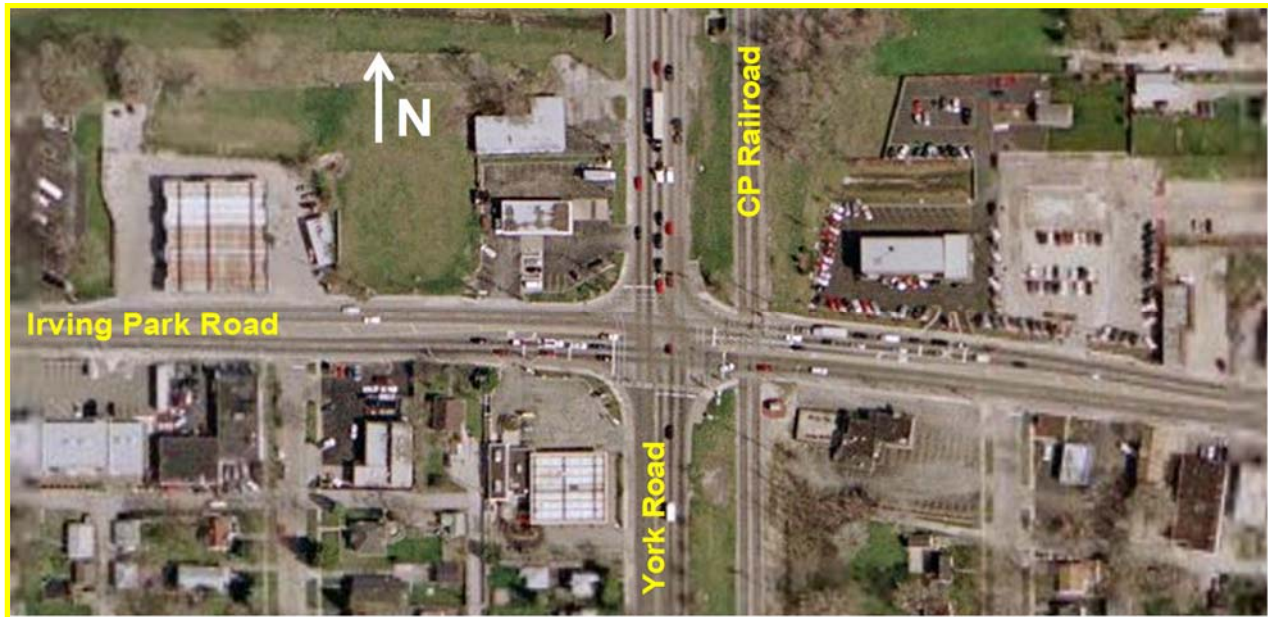
Communities Benefited:

- Bensenville, IL

Project Status

Project Completed October 2017

Project Location Map



Construction of retaining wall



Excavation for construction of swale to Bensenville Creek