



CREATE

KEEPING THE GO IN CHICAGO

WA3

Signalization – Ogden Junction to CP 518

Location

Norfolk Southern tracks from Ogden Junction near the intersection of Ogden and Western Avenues to a location near the intersection of 40th St. and Canal (Control Point 518)

Chicago Community Areas: Armour Square, Bridgeport and McKinley Park.

Chicago, IL

Daily Trains Affected

25 freight trains

36 Metra trains (Heritage Corridor & SouthWest Service)

14 Amtrak trains – Michigan Services, Amtrak Capitol Limited, Lakeshore Limited

Scope of Work

This project replaced/installed power operated switches and a Traffic Control System (TCS) along the Norfolk Southern main tracks. WA3 signalized and allowed bi-directional movements along the main tracks through Ashland Avenue Yard from 22nd Street to Control Point 518. The project added a passing track alongside the Ashland Avenue Yard.

Benefits

This project increased train speeds and added capacity along the NS main lines in the project area. Previously, most trains spent up to one hour to traverse the limits of this project given the hand-thrown switches. With the completion of this project, trains pass through this 5.2-mile segment in as little as 10 minutes. Improved signalization relieves chronic congestion of Metra, Amtrak, and freight trains at Control Point 518 south of Union Station.

Communities Benefited:

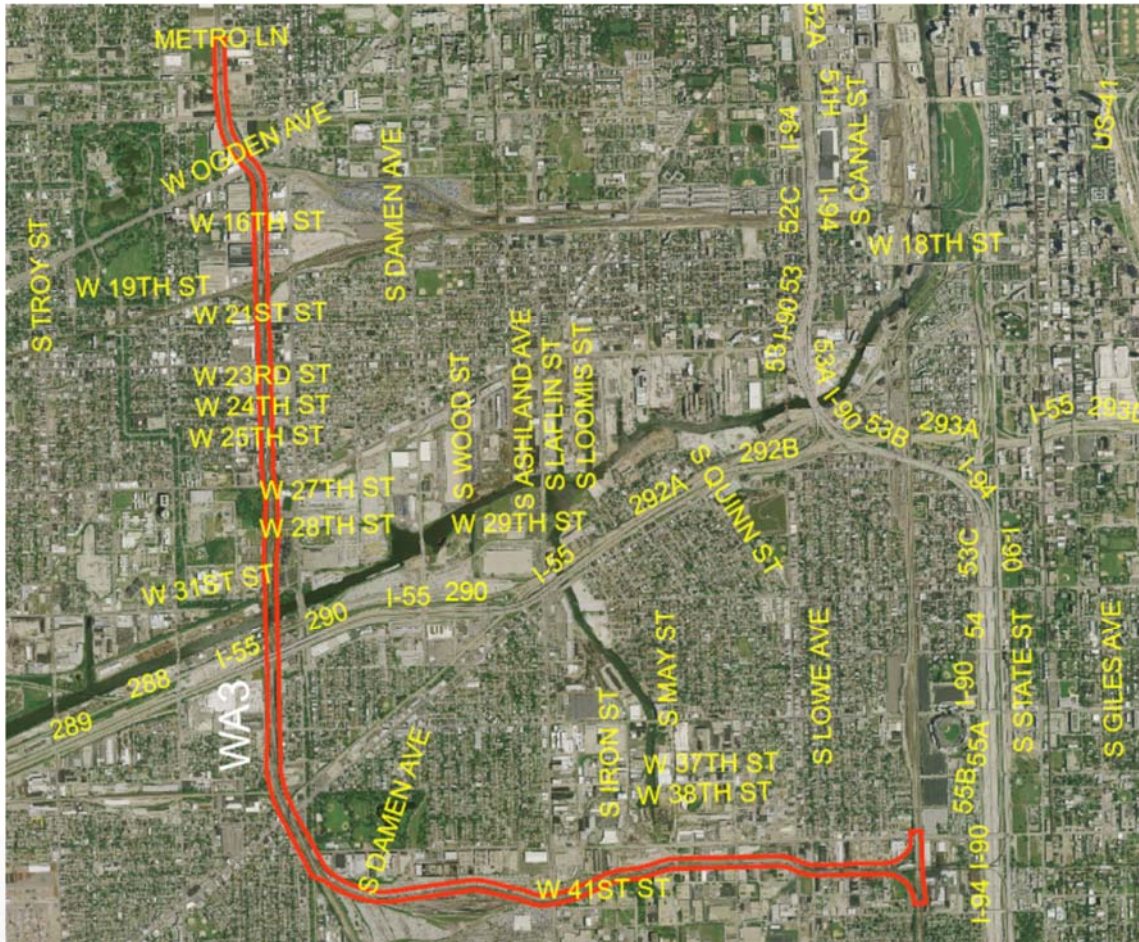
- Communities along the Metra SouthWest Service
- Communities along the Metra Heritage Corridor



Project Status

Project Completed June 2016

Project Location Map



3 TRACKS

WARNING
\$250-\$500 FINE FOR ANY
MOTORIST OR PEDESTRIAN

6/2018